



L'APPARTEMENT

MARIANA OUSHIRO

18.09.25 - 19.12.25

CONVERGENT
LINES

Objects
With
Narratives

MARIUS RITIU

JOJO CORVÄIÁ

MAARTEN VROLIJK

CONVERGENT LINES



Portrait of Marius Ritiu

In the first room, **Marius Ritiu** (b. 1984, Romania – based in Antwerp, Belgium) presents monumental sculptures and functional furniture that assert mass and presence, grounding the space with their architectural scale and texture. The second room shifts to the intimate and tactile, where **Jojo Corvăia** (b. 1970, Venezuela – based in Berlin) exhibits ceramics that sit like meditative relics atop plinths, bearing the trace of the hand in their raw, earthen surfaces. In the third room, a contemplative study, **Maarten Vrolijk** (b. 1966, Netherlands – based in Amsterdam, Netherlands) offers delicate lamps and vessels that blur the line between sculpture and utility, each object inviting close inspection. Throughout the gallery, **Mariana Oushiro** (b. 1992, Brazil – based in New York) creates a counterpoint with her paintings—floating on the walls, gestural and geometric, introducing a sense of movement, emotion, and spatial rhythm.

L'Appartement Gallery is pleased to announce Convergent Lines, a group exhibition that brings together the expressive canvases of painter **Mariana Oushiro** in dynamic conversation with the work of artists and designers **Jojo Corvăia**, **Maarten Vrolijk** and **Marius Ritiu**. Spanning the gallery's three distinct rooms, the exhibition traces the intersections between fine art, sculpture and design through a shared reverence for materiality, process, and architectural influence. Each artist engages deeply with organic forms and natural materials—whether through hand-molded ceramics, sculptural metalwork, fluid vessels, or layered brushwork—foregrounding the tactile and the elemental.



Portrait of Maarten Vrolijk



Portrait of Mariana Oushiro

Mariana Oushiro's practice is rooted in a dialogue between control and spontaneity. Her paintings often begin with precise architectural lines and geometric structures, which are gradually layered with fluid gestures, organic forms, and luminous color fields. This tension between order and freedom evokes a kind of visual choreography—lines converge, shapes dissolve and space becomes elastic. Working directly on the canvas with her hands, knees, and feet, Oushiro uses her entire body as a tool, allowing physical movement to shape the image. This performative process infuses the work with a visceral rhythm, reinforcing the sense that each composition is not only painted but danced into being. Deeply influenced by natural elements and architectural rhythm, Oushiro's work explores the permeability of boundaries, both formal and emotional. In *Convergent Lines*, her canvases act as connective tissue between the static, grounded forms of the objects and sculptures and the unseen energies that animate them.

Convergent Lines invites viewers into a choreography of contrasts: between weight and lightness, permanence and motion, structure and spontaneity. While the sculptural and design works stand still, rooted in gravity and form, Oushiro's paintings appear to dance—colliding and recombining, suggesting flux and transformation. At its core, the exhibition explores how divergent practices can converge through a shared language of material exploration, and how architecture, in its many guises, informs and inspires the creative act.



Portrait of Jojo Corvää

L'APPARTEMENT

Our overarching ambition is to cultivate a dynamic community that engages both seasoned collectors and younger generations, while revitalising the Geneva art scene.

Founded by Thea Montauti d'Harcourt Lyginos, L'Appartement is a space dedicated to hosting focused exhibitions that highlight specific artists projects and dialogues.

Through diverse exhibitions, collaborations and off-site projects, L'Appartement Gallery, Geneva aims to create a dynamic podium for emerging and established artists worldwide and to create a dialogue between modern, contemporary art and design. At the core of the gallery's vision is the nurturing of emerging talents alongside historically significant artists.

Embracing a modern, hybrid gallery model, L'Appartement seeks to build connections between the art industry and other sectors, thus expanding the influence of art on diverse audiences. Nestled on the second floor of a historic building in Geneva, the gallery offers an intimate setting for collaborative initiatives, involving artists, international galleries and independent curators. Complementing the gallery's presence in Geneva, our off-site space, Il Castello di Azeglio in Piedmont, Italy, launching in 2026 will be an incubator for the development of ideas and artworks.

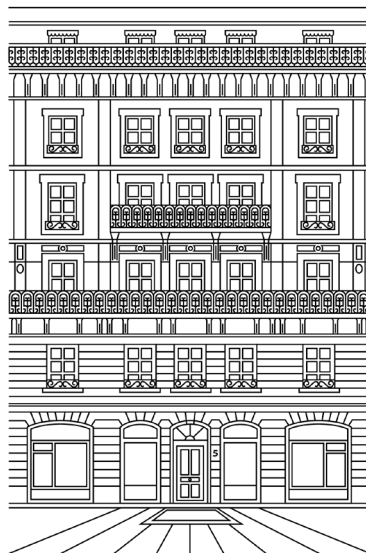
L'APPARTEMENT

THEA

MONTAUTI

d'HARCOURT

LYGINOS



5 RUE PIERRE-FATIO
1204 GENÈVE

www.lappartement-geneve.com
@lappartement_art_gallery
marine@lappartement-geneve.com